



The Freshford Newsletter

Autumn 2024



Looking to sell or rent your property?

Call or drop into our friendly office to discuss your marketing requirements.

01225 866111 bradfordonavon@cobbfarr.com
37 Market Street, Bradford on Avon BA15 1LJ

**COBB
FARR**

Are you looking for a skilled,
professional local decorator?

Do you need a reliable and
capable person to assist with
odd jobs?



Rupert Kirby

decorator and handyman

I am an experienced, friendly person who can carry out a wide range of decorating and other jobs.



Specialising in:

- *Hand painted kitchens*
- *Decorative finishes*
- *Furniture painting*
- *Polished plaster*
- *Conservation work*

Contact details:

01225 722289

07547 590775

rupertkirby@ymail.com

Welcome to the Autumn '24 Newsletter

There's no getting away from the impact of the A36 closure on Freshford and Limpley Stoke, covered in articles in this edition. Residents, School Governors, Parish Councillors, Ward Councillors and MPs have all been contacting National Highways, B&NES and Wiltshire Council to report problems and explore possible mitigation measures. Parish Councillors will continue to liaise with National Highways and report back to residents. Thanks are due to Cllr Julian Carpenter, the Parish Council's Transport & Highways representative, for the time he's spent on this matter.

Back in May, the Parish Council tried a new format for the Annual Residents Meeting. Using a round table structure, residents were invited to bring forward ideas for the future of Freshford under a number of themes: Village Economy; Food & Nature; Energy & Housing; Transport & Amenities; and Youth Activities & Projects. Residents rose to the challenge and it was great to see the positive discussions that emerged. We hope that new links were forged and that the seeds of ideas were planted.

To turn ideas into a reality takes time and people, and the Parish Council would welcome more people! We have vacancies for parish councillors and ask residents to consider this opportunity to put something back into this vibrant community. Being a councillor involves attending a monthly meeting (second Monday of each month) and being involved with projects, to an extent that suits you and your circumstances. If you have questions about the role please get in touch.

We're also looking for a new Clerk, the only paid position on the Parish Council! It's an interesting, flexible and varied role. At 7 hours/week it works well around other life commitments. Good communication and administration skills are essential, previous experience is helpful but not a requirement as there's training and support available. Contact the Parish Council to find out more.

Now that the nights are drawing in, residents may notice the new LED street lamps that were installed in April. With the eleven new lamps, over half of the Parish Council's street lamps are now LED, reducing energy usage, maintenance and costs.

Continuing the energy theme, Bath and West Community Energy (BWCE) gave presentations about a proposed community solar energy project. The project is at an early stage, but a suitable piece of land has been identified and a grid connection confirmed. BWCE will be conducting more community engagement and consultation, so look out for updates.

Cllr John Adler (Chair) & Selina Jobson (Clerk)

Email: parish.council@freshfordvillage.com / Website: www.freshford.org.uk



Neighbourhood Watch

The Freshford Neighbourhood Watch encompasses Freshford and Pipehouse. Its role is to promote crime prevention and to keep people informed of incidences in our locality.

If you would like to be part of the Freshford NW and receive occasional updates -- please don't hesitate to get in touch and I will put you in touch with your local NW contact covering 15 patches within our area.

Every first Tuesday of the month an informal Police Surgery is held with our local PCSOs over a cup of coffee at The Galleries Café at 10:30am. Come along and have a chat. Upcoming dates are 8th October and 5th November.

Keep Watching 👁️!!

Freshford Neighbourhood Watch Coordinator

David Webster 📞 +44 (0) 7584076652 • ✉️ david.m.webster@me.com

Lets talk

Curtains, Blinds & Cushions

Alterations to soft furnishings

Free estimate

Call Naomi

Freshford 722218

**FRIARY
EGGS
& HONEY
FOR SALE**

Friends of Freshford

Since the last newsletter, we have held three enjoyable fundraising events. Quiz Night in March was again a great success and raised over £1,200 - our best ever! Thanks to all those who joined in and we hope everyone had a fun evening. Thanks again to our brilliant quizmaster Richard Blamey.

We continued with our programme of film nights with a showing of 'The Titfield Thunderbolt' in April which gave everyone a taste of Freshford in the past with the added attraction of a display of railway memorabilia by Roland Birchby. Lastly, we manned our coconut shy at the village fete in June and took over £240 for the fete from what seemed like a never-ending queue of enthusiastic children.

Events planned for the rest of the year include two further film nights: a Halloween night on 31st October with a showing of 'Carry on Screaming' and an episode of 'The Munsters'. For Christmas we have a showing of 'It's a Wonderful Life' on 20th December.

We also have 15th November booked for a Jazz night in the Hall. The band is called 'Speak No Evil' and they play classic modern, entertaining favourites - exciting to listen and to dance to.

Our AGM is set for 28th November for members to hear a full report on our activities and to vote a new committee. Also, and most importantly, we plan a Quiz Night for next year in March. Details of all events to follow.

Our fund raising has enabled us to make a donation to the St Peter's Church for the refurbishment of the church tiles. Since the Spring we have kept up our regular gardening maintenance days at the Station Gardens with volunteers supervised by our committee member Paul Jupp.

Get ready this autumn for the Freshford and Limpley Stoke 'Big Bulb Planting', organised by Meadow in my Garden, Friends of Freshford and Nature Chain. Thanks to funding from GWR, we will be purchasing thousands of beautiful bulbs for a spectacular 'Rivers of Gold' flowing through our villages. Every household is invited to join in and will be provided with bulbs and a mapped location for planting. Native daffodils, as well as some miniature daffodils, winter aconite, wild tulips and pale-yellow crocus... each species of bulb has been chosen to naturalise over time and be in keeping with their surroundings. As well as the beauty that we and future generations can enjoy, the spring flowers will create flowering corridors of forage, providing an important food source for our pollinators.

For further details, and to get involved, contact Paul and Loulou:

info@meadowinmygarden.co.uk

Friends of Freshford has an extensive membership of over 130 members and anyone wishing to join should contact John Ager at agerjs@aol.com.

We have seen exceptional success in recent years and now 75 young people and 12 adult volunteers are involved in the term-time sessions. We recently moved to a Trustee Board and are very keen to increase the number of Trustees we have overseeing the group.

Beavers



Over the summer term the Beavers continued to develop their outdoor skills, learning to put up tents, cooking on a fire and orienteering around the village!

They also took part in a 2 hour hike from Farleigh Hungerford Castle to Freshford, fantastic fun on a summer evening.

This all led up to a brilliant sleepout in Freshford Village Hall, the first night away from home for lots of our Beavers and a great experience for everyone.

Cubs

This summer, the Cubs have learnt everything from knife-skills and shelter-building to cooking, map-reading, art and drama, in the lead up to our weekend summer camp. Setting up the camp from scratch, cooking for themselves and rising to the challenges we set them over the course of the weekend was a great test of their skills. This term, we're developing their essential scouting skills further, with sessions on knots, first aid and navigation, working towards badges for cycling and leadership, and, of course, having a load of fun along the way!

Looking ahead to this term, the Cubs will be running a fundraising car wash on 13th October from 10:00-13:00 in the Hall carpark. Please come along and support their efforts!



Scouts



A team of our Senior Scouts came a close second at a two-day Strategy Challenge. This saw them compete against several thousand other Scouts and Guides to complete a wide range of challenges set across Cirencester Park. A great way to cap an excellent year of scouting for the whole Troop. This shows that our ambitious programme of training is producing confident, fit and skilled scouts who are up for any adventure. We also enjoyed a five-day camp in Dorset meaning some Scouts had over 10 nights away over the year!

Thanks, as always, to the volunteers and parents for all their help and support. We would love to hear from anyone who would be interested in joining our Trustee Board, in particular anyone with experience in charity governance and managing volunteers. We would also like ~~to increase the number of female~~ leaders, reflecting the significant number of girls in the group.

Please get in touch via our website: www.bathscouts.org



Diana Monk

visiting podiatrist

MSSCh. MBChA
Hcpc19221

Tel 01458 851255 for an appointment



Retirement of Reverend Mike Taylor

Many of you will know that Mike is retiring at the end of October with his last service in the parish in St Peter's Church, Freshford at 10.30am, on 29th September.



Mike has served faithfully in this parish for the past eight years, and we are immensely grateful to him for all that he and his wife, Lindy, have brought to our community. They will be moving to the Pembrokeshire area with Mike's mother, Celia, and they will all be greatly missed by us. We wish them well as they enter this new chapter in their lives.

For our village and the wider parish, it will also be a new chapter. We will enter a period of vacancy, during which our church services will be led mainly by visiting clergy. All details will be available on our website (flshc.co.uk), and candy boards will be on the gates of our parish churches as usual in Freshford, Limpley Stoke and Hinton Charterhouse, indicating the specific church for the following Sunday. The wardens and others will try to make this transitional period as smooth as possible for everyone. Please address any enquiries to: contact.pariishopoffice@gmail.com

There will be a new incumbent in the fullness of time, but this may take a period of several months. What we do know is that this will be a part time House for Duty appointment. In simple terms, he or she will reside in the Rectory in Freshford, and will be employed for two days per week, plus each Sunday for services.

Once we know more, we will share it as widely as possible. In the meantime, you are all very welcome as ever to our church services and don't forget that our churches are open daily, throughout the parish for visitors.

Freshford Community SpeedWatch

The Freshford Community SpeedWatch volunteer group is being reactivated this autumn in response to increased traffic flow through the village. We operate under the auspices of the Avon and Somerset Constabulary, to whom we report, and from time to time monitor traffic speeds along Freshford Lane, the High Street and the Church Lane approach to the village. Our duties are not onerous and if you would like to join us, or would like further information, please contact me at freshfordjppj@gmail.com.

John Jenkins, FCSW Co-ordinator

Freshford Baby and Toddler Group



Toddler group met in the Old Bakery earlier in the year and then, once the warmer weather finally arrived, we met in Freshford Park with its open spaces and shade for our picnic blankets. The Old Bakery is a great crawling/toddling place for the little ones with all the regular toys. We did a spot of hand - and foot! - painting to brighten up our wall display, and brought in playdough for the older ones, who were getting ready to leave

Toddlers and have started at Freshford Preschool this term. We say goodbye and thank you to Isabella and her Mum, Emilia, for the company and cakes this last year! And we look forward to our first meet up later this month in a newly-decorated setting.

Toddler group runs every Thursday during term-time from 10-11.30am in The Old Bakery, Freshford.

Contact: Rhiannon 07519 971151

Wild Waters Festival

A celebration of nature & community

31 May - 15 June 2025

Twelve parish councils along the river between Bradford on Avon and Batheaston are getting together to host a festival of events around the theme of the river.

Our aim is to raise awareness of the climate and nature emergency and promote our many wonderful local grassroots organisations.

Events will include walks, talks, films, exhibitions, workshops and more.

If you would like to help organise a local event please contact Elli Bate at parish.council@freshfordvillage.com

Parish Council Traffic & Highways Update

Since the last Newsletter, the main focus of my time has been reacting to the A36 seven-month closure. I have worked with National Highways, B&NES officers and lately Wiltshire Council Highways to seek to mitigate the impact on Freshford residents.

There is no easy solution when a major trunk road, used by most residents, is closed for such a long period. I am convinced by the arguments presented by National Highways that the work is essential to maintain the sustainability of the road due to undercutting by water draining down the hillside.

To date my efforts have addressed some of the following:

- Persuading National Highways to extend the period of the marshals from the original two weeks.
- Improve the force of the signage at Church Lane/Midford Lane junction.
- Pressed National Highways to address the issues of Crowe Hill, which has taken a 200% increase in traffic leading to conflicts with residents.
- I have attended three meetings with National Highways, B&NES officers and Wiltshire Council Highways.
- I have drafted three village emails to keep you informed of latest developments.

I commend the comments of Talia Kelly on behalf of Freshford Church School Governors' to use sustainable transport. We are very lucky to have a daily bus service and a reasonably reliable train service. These are rare facilities in B&NES. Please use them wherever possible.

I have also been working on the Ralph Allen/Centurion school bus issue, where the bus is not dropping students on the A36 because of repeatedly getting stuck due to poorly parked vehicles. The outcome appears to be that the bus will not be coming back into the village due to these parking issues. Mitigation efforts are to make the walking routes for the students affected safer for the winter months. This is not ideal but the best that can be done in the short-term, whilst other solutions are explored.

If you have particular issues or concerns relating to transport and highways please contact me via the Parish Council's email: parish.council@freshfordvillage.com.

Cllr Julian Carpenter

The Freshford and District Horticultural Show



The Freshford and District Horticultural Show took place in early September in Freshford Village Hall. Despite a summer of difficult weather conditions, there was still a goodly number of entries in the produce and flower classes and well done to all who took part. The best in show in Vegetable classes was won by Peter Jones with his superb shallots and Chris Bocci won best in the Fruit classes with his apples.

The painting, photography and cookery classes were very well supported, with the class for ginger cake having some superb variations on the theme, with samples available for people to taste in the afternoon. The handicrafts entries were most inspiring and showcased the talents of a number of local residents.

Candy Harrison won the cup for the most points achieved overall in the show and the Harrison family were the winners of the Family Cup.

In the Children's section, Ruben Scanlon was very pleased to win the Children's cup. Entries in this section were down a little this year and we'll work on encouraging more children to take part next year.

The Show is always a lovely village event and thanks to everyone who supports it.



Nature Chain Update



Since our last update there's been a lot going on. In March we had an interesting talk, with much local relevance - 'Tackling River Pollution' from James Wallace and Chloe Peck from the charity River Action. They were about to warn that the Oxford/Cambridge boat race was in polluted Thames water and, sure enough, that hit the national headlines just days later!

In May, Rob Needham, the local representative for the Beaver Trust, shared a mountain of fascinating information on beavers. We have a healthy beaver population in the Avon catchment area and some specifically in the River Frome at Freshford.

In May the birds were singing, and our local expert, Robert Kelsh, took a group of us on a walk to listen to, and identify, the various birds singing away. I'm sure all those present hear many more goldcrests now!

In June it was Open Gardens, in collaboration with the Freshford and District Horticultural Society. Sixteen gardens were open and nearly 230 people took the opportunity to look around and appreciate the wide variety of gardens we have. Hopefully people came away with ideas on how to better fashion their own gardens to help wildlife.

We ran a stall at the Village Fête in July and families enjoyed the quiz and painting bees on pebbles - hopefully learning about the wildlife around us whilst having a fun time. July also saw Robert Kelsh back in action, this time showing us what he had caught in his moth trap overnight - 454 moths of 85 different species! An amazing sight and some beautiful moths.



Nature Chain Update



Our Meadows Group has been busy working up a model for shared grazing, with help from Young Wilders. The aim is to ensure some of the smaller meadows around Freshford and Limpley Stoke become homes for wild flowers and all the insects that feed on them, and so on up the food chain, notably to birds.

We are planning activities for the winter months and start with a talk on 'The Secret Life of Soil' at 7.00pm on 25 September in Limpley Stoke Village Hall. Our friends in Nature Chain Winsley also have talks planned in St Nicholas Church, Winsley on the Wilts Biological Records Centre (7.30pm on 10 October) and 'Wasps and Wannabees' (7.30pm on 13 November).

Also coming up is the wonderful Freshford and Limpley Stoke Big Bulb planting, organised by Meadow in my Garden, Friends of Freshford and Nature Chain. This will create a beautiful display of flowering bulbs through our villages. Details are in the Friends of Freshford article in this Newsletter and contact info@meadowinmygarden.co.uk for further details.

We hope you've enjoyed some of these activities. Please become part of Nature Chain and join our email list (link on our home page at www.naturechain.co.uk). Please do everything you can to make your gardens friendly to wildlife and to create wildlife corridors through the village and between the fields and woods that surround us.



A Chance to Help Local Endangered Amphibians

Can you spare some time to help our local toads and frogs cross a road?

Populations of common toads, frogs and newts are declining rapidly in the UK. Thousands are killed on roads each Spring as they migrate to the breeding ponds they have used for generations.

Our local rescue group saves approximately 2000 amphibians each year from being killed by vehicles on their migration route to and from their breeding grounds in Tucking Mill Lane.

We greatly need more volunteers to patrol on mild wet evenings in February and March.

You can take part as little or as often as you like. Although, if possible, a regular once a week commitment would be very helpful. Volunteers patrol in teams of 2 or more on a shift system for approximately 1.5 hours between dusk and 9:30pm in Tucking Mill.

Short training, hi-vis and answers to your questions are provided.

All volunteers must meet the insurance policy criteria, and our insurance scheme restricts patrollers to adults only. Everyone is required to complete a Patrollers form.

You will need warm clothes, a bucket, a good torch, and non latex gloves.

Interested? Please respond ASAP but no later than 12th January 2025 to the Amphibian Rescue Group co-ordinators Lyndi and Lena at tuckingmilltoads@gmail.com. Thank you for your help in advance.



Froglife

www.froglife.org

Avon Reptile and Amphibian Group

www.groups.arguk.org/arag

Freshford and Limpley Stoke Home Energy Group (FLHEG)

The price most households pay for gas and electricity will rise by 10% on average from Tuesday 1 October as energy regulator Ofgem has announced the latest Energy Price Cap rates. But the good news is that FLHEG is here to help with advice to save energy as we always are.



Now that the weather is getting cooler FLHEG is restarting home energy surveys using our new thermal image camera. We surveyed over 30 local homes last year, providing personalised, friendly, advice. The survey takes around an hour and we ask for a £5 donation. If you'd like your own energy survey with our new thermal camera, contact us at: flhegroup@gmail.com

A simple energy saving measure is to install radiator foil behind radiators on external, uninsulated walls to reflect heat back into the room instead of heating the walls. FLHEG offers a radiator foil installation at a total cost of £2 per radiator. In the autumn, as we reluctantly think about turning our heating on again, we'll be organising a talk on Retrofitting. Retrofitting is the process of improving energy efficiency and lowering costs permanently through measures like insulation and draught-proofing, as well as installing heat pumps and solar panels. Especially for older homes, this is the long-term solution to energy-saving and lowering costs, but it can be hard to know where to start, so come hear from the experts in this crucial area.

Sign up to our mailing list by sending us an email and we'll let you know when it's happening.

We're keen to recruit new members to help keep our community warm and energy-efficient! Email us for more info: flhegroup@gmail.com and see our page on the Freshford community website.

Your legacy can be a stronger community

Our community is **special** because we have so many individuals who invest their time and expertise in making it a better place for us all to live and work. Most of this is carried out by volunteers but funds are also needed to support the upkeep of our community.

Leaving a legacy to your local community charity is **simple**. By naming the Freshford & Limpley Stoke Community Association (FLiSCA for short) as a beneficiary in your will we will ensure your money is used to support a variety of important local causes and to respond to changing needs over time.

This is a **tax efficient** way for you to create something of real and lasting value and benefit the generations to come.

We **guarantee** to use your donation in the best and most effective way to improve lives in our local community whilst adhering to your wishes.

Tax benefits

- Legacies are tax-free since they come out of an estate before inheritance tax is applied.
- By leaving 10% of an estate to charity a reduced rate of inheritance tax can apply.
- The current 40% inheritance tax rate can be reduced to 36%.



Your generosity could help fund projects to:

- Encourage greater environmental diversity by strengthening local ecosystems and natural habitats.
- Build new community infrastructure.
- Improve the health and mental well-being of our residents by supporting new groups and societies.
- Reduce the carbon footprint of our community.
- Preserve the heritage and protect the future of our two villages.

Grant giving expertise

- The board of trustees comprises a cross section of local residents and includes representatives from Freshford and Limpley Stoke Parish Councils.
- Over £70,000 has been awarded in grants in the last 15 years.
- All trustees are volunteers which means 100% of your money goes to the final beneficiaries.

You can provide financial support by:

- Making a regular donation.
- Making a one-off donation.
- Adding a codicil to your will.
- Making a change to your will.

Please note: if you don't have a will or want to make amendments to an existing will we recommend you consult your solicitor.



Next steps...

If you would like to find out more about giving money to your local community charity please email: fliscamail@gmail.com

Nearly New Sale

Children's clothes

Toys & equipment

 Children's books 

Sunday 17th November

2pm - 4:30pm

Freshford Memorial Hall

 Refreshments 
Crafts & Gifts

All proceeds to **PCR^F** 
Palestine Children's Relief Fund

Please bring donations to the hall on the morning of the sale
or call Paul 07717 096888 or Loulou 07562 983383

Freshford Church School - Village History Study

In November and December, all the children in the School will become local historians to uncover some of the fascinating stories from the past that have shaped Freshford into the village it is today.



The youngest will look at the buildings, investigating old and new and how some may have been used in the past. Our three older classes are looking at different aspects: The Victorian School, Dunkirk Mill and the impact on Freshford of the wool and cloth industry over time and the lives of the Men of Freshford from the war memorial.

We shall, of course, be using Alan Dodge's wonderful book 'Freshford: The History of a Somerset Village', Freshford.com and our treasured school log books, but if anybody had relevant artifacts, stories, history of their homes, or photographs not on Freshford.com, knowledge of notable residents from the past, or anything that might light a spark, we would love you to get in touch. We want this to be a true community project and hope to be able to share our work with you.

Ruth Poole, Headteacher (Ruth.Poole@freshford.bwmat.org)

Beckington Family Practice

We are delighted that Dr Rory Stevens joined the team in September, as a salaried GP working 6 sessions each week at the practice. Also new to the GP team is Dr Emily Fitzgerald, a final (ST3) year GP in training, who joins our existing GP Registrar Dr Dom Bashford.

Our Flu Vaccination program is underway and we encourage those who are eligible for a free NHS flu vaccine to take up the offer (patients aged 65 and over and eligible patients at high risk, e.g. with certain long-term health conditions).

Text messages have been sent to all eligible patients with a mobile number on record. For those eligible patients who do not have a mobile number registered with the Surgery, please telephone us after 2pm on 01373 830316 or 01373 464731 or book in person at the Reception desk in Fromefield or Beckington Surgery.

If you are aged between 18 - 64 you can check your eligibility status at: www.nhs.uk
We are only able to vaccinate those patients that meet the eligibility criteria.

Freshford Village Memorial Hall



The Freshford Village Memorial Hall continues to be well used and much enjoyed by the community. Bookings are up, allowing us to continue with our improvement plans.

This Autumn we will replace the old parquet floor in the main hall with a floating, beechwood flooring which will be sprung and will be more appealing to groups using the hall for exercise classes. We are also installing a new stage curtain. We have taken delivery of 125 chairs. They have much more comfortable seats and can be stacked on trolleys to make them easier to access and put away.

Thanks to the 'Galleries Heavies' who cleared an enormous root-ball blocking the main drainage in the car park. This has allowed us to cancel the replacement drainage and massively reduce the cost of resurfacing. We have had generous contributions from Freshford Parish Council and The Galleries enabling us to plan the resurfacing of the car park, hopefully to be completed from 25th to 28th October. Please look out for details of parking and access limitations to the Galleries and the Hall over this weekend.

Freshford Preschool are busy working on plans to revamp the rear garden over the next few years. Watch this space as we begin to fundraise, design and get ready to create a fresh new space that is safe, full of sensory areas and exciting activities for our preschoolers. Do get in touch with them if you want to find out more.

Our plans for 2025 include bringing the foyer/kitchen end of the building up to the same standard as the rest of the Hall and to reduce roof leakages. If we can raise the funds, we aim to add solar panels on to a replacement roof over this end of the building to further reduce our carbon footprint and our utility bills. At the same time, we will be able to refurbish the lobby/kitchen/toilet areas which will make the building more attractive. We are also planning a revised storeroom layout to maximize the use of the space available.

The Trustees hope to be able to raise grant funding to make these objectives possible.

Footpaths

Alan Gwynn, Freshford Parish Warden

Email alangwynn@gmail.com Tel: 01225 723270

Freshford and Limpley Stoke are in the Area of Outstanding Natural Beauty, set up in 1967. It is now known as the Cotswold Natural Landscape which gives the area some extra planning protection. The Cotswold area stretches from Freshford right up to South Warwickshire.

The overall management comes under the Cotswold Conservation Board. The Board publish a free magazine twice a year "Cotswold Lion" copies of which are stocked in the Village Shop.

Locally, the Avon Valley Cotswold Wardens Volunteer Group carries out maintenance work on hedges, footpaths and all matters pertaining to the countryside. Their area stretches from Freshford across to Box, up to Old Sodbury and the area in between including Wellow.

Each Parish Warden liaises with the Parish Council, walks the footpaths and can call upon volunteer work parties to clear paths and install gates. Ultimate responsibility for paths and Rights of Way is with B&NES. Recently, I have worked closely with the RoW Officer to repair, widen and resurface the path from the Tynning to Dunkirk Mill and another path off Rosemary Lane in Hinton. The Parish Council organised the clearing of the path from the Tynning to the Frome River Bridge.

I am the designated Parish Warden for Freshford and know the 21 local footpaths well, having lived in the area for 50 years. Any problems with footpaths, gates or hedges can be reported direct to me or the Clerk to the Parish Council.

Galleries Cafe

Coming into the colder months, we are serving up some hearty dishes alongside our lunch menu.



These vary day to day, but some examples include Red Lentil and Tomato Dahl, Cheesy Bacon Tartiflette, Sweet Potato and Coconut Katsu Curry, Baked Macaroni Cheese, Carrot and Potato Moroccan Tagine; as well as our seasonal soups! Be sure to check our daily opening times, and come along and enjoy a homemade lunch with friends and loved ones, and support to fund this community hub!

Freshford Community database

Name	Description
Freshford Parish Council	Freshford Parish affairs
Limpley Stoke Parish Council	Limpley Stoke Parish affairs
Freshford & Limpley Stoke Community Assn	FLISCA - provides community grants
Freshford Village Memorial Hall	
Limpley Stoke Village Hall	
King George V Playing Field	Protected Fields in Trust, Limpley Stoke
St Peters, St Marys and St John the Baptist churches	Supporting infrastructure and affairs of the three parish churches
Freshford Church School	Primary School Freshford School PTA
Freshford Preschool	Preschool setting in the village hall Freshford Preschool Committee
Freshford Scout Group	
WERN Village Agent	Advice & Support Services
Freshford & District Tennis Club	Tennis club
Freshford & Limpley Stoke Energy	Community solar panels
Freshford and Limpley Stoke Home Energy	Community Advice on energy
Freshford Station Garden	
Galleries Management Committee	
Friends of Freshford	Protecting amenities and rural environment
Nature Chain	Creating wildlife corridors for our villages
Community Speedwatch	
Train timetable	
The Inn at Freshford	
Woodland Trust	
Limpley Stoke CBS	Hop Pole community pub
Freshford & Limpley Stoke Transport Link	Door-to-door transport service
Freshford Horticultural Society	
Freshford Local History Society	
Freshford United Football Club	
Cricket	
Cycling	
Petanque	
Film Society	Limpley Stoke Hall
Freshford Baby & Toddler Group	
Singing Group	

Contact	Position	Email
John Adler	Chair	parish.council@freshfordvillage.com
Ian Barnes	Chair	ian.barnes@couldis.com
Simon Coombe	Chair	simonhjcoombe@hotmail.com
David Wright	Chair	david52wright@gmail.com
Holly Stephenson	Bookings	bookings@freshfordvillagehall.co.uk
Orla Morrish	Secretary	orlamorrish@gmail.com
Sue Keeling	Bookings	limpleystokehall@gmail.com
c/o Limpley Stoke PC		bryony.kohn@gmail.com, 01225 723749
Roland Birchby, Steve & Debbie Ashcroft	Churchwardens	birchbyr@gmail.com steveashcroft@hotmail.co.uk debbieashcroft@live.co.uk, 01225 723987
Revd Mike Taylor	Vicar	vicarmike@gmail.com, 01225 723570
Debs Jones	Enquiries	parishoffice@gmail.com, 01225 720347
Andrew Wishart	Headteacher	Andrew.Wishart@freshford.bwmat.org
Emily Pennant-Rea	Chair	emilypennantrea@gmail.com
Debbie Giles	Headteacher	leader@freshfordpreschool.co.uk
Rhiannon Meredith	Chair	chair@freshfordpreschool.co.uk
Harriet Hodgson	Chair	designbyharriet@gmail.com
Sam Lascelles	Group Leader	samtjoseph@hotmail.com
		chantal@wern.org.uk
	Chair	gez.rideout@gmail.com
Stephen Dawson	Chair	stephenjrdawson@gmail.com
Richard Tibbles, Philip Haile	Members	flhegroup@gmail.com
Rowena Wood		rowena_wood@compuserve.com
Simon Coombe	Chair	simonhjcoombe@hotmail.com
Richard Blamey	Chair	friendsoffreshford@gmail.com
Steve Best		steve.r.best@gmail.com
John Jenkins		johnpjenkins@hotmail.com
Gordon Edwards		gordon.edwards@ipts.co.uk hello@theinnatfreshford.com
Joe Middleton		joemiddleton@woodlandtrust.org
Simon Coombe	Chair	simonhjcoombe@hotmail.com
John Agar	Co-ordinator	07714 169216
Penny Jones		peter.pennyjones@gmail.com
Chris Birleson	Chair	chris.birleson@dentons.net
Niall McDougall		winsleycricket@gmail.com
Alan Dun		alandun78@gmail.com
Ian Barnes		ianbarnes4753@gmail.com
Nick Catcheside		nick@medicare.com
Rhiannon Meredith		chair@freshfordpreschool.co.uk
Alan Dun		alandun78@gmail.com

Freshford School PTA Update

Last term, with heavy hearts, we said goodbye to our inspirational and much loved Headteacher, Andrew Wishart. It was wonderful to see so many from the community come and celebrate all that Andrew has given to the School at his farewell party. In his words, 'it was a stunningly beautiful coming together of community in recognition of the good that we have achieved together since 1998'.

He will be sorely missed but we know we are in excellent hands with the inspirational Ruth Poole, who has been central to the ethos and vision of the school for the last 12 years, and now takes on the role of Headteacher.

An ode to Andrew Wishart

From the Freshford School PTA with much love

Problem solver

Joy evolver

Passion speaker

Nativity weeper

Rubbish collector

Earth protector

Hot chocolate server

Admin swerver

Mint tea supper

Washer upper

Crumb sweeper

Willow keeper

Verbose talker

Mountain walker

Wasp nest carer

Coffee bearer

Library owner

Sticker donor

Fire lighter

Missive writer

Kitchen cleaner

Shakespeare dreamer

Super speller

Story teller

Nature lover

Friend and brother

Arts adorer

Let's explorer

Soul reacher

Childhood teacher



Freshford School PTA - Fundraising Update

The PTA has had another successful year providing the necessary additional funds for the School, much of which go to the provision of teaching assistants. Funding requests for anything from equipment to experiences are met with enthusiasm and lots of hard work behind the scenes from a team of volunteers who make it all happen.

We are hugely grateful to the outgoing PTA team who have led with such positivity and have contributed enormously to our fantastic village school. As a new team, we look forward to another year of supporting our School with lots of exciting plans and continue to be grateful for the ongoing support from the whole Freshford community.

Over the past academic year, through donations and multiple fundraising events (a music concert performed by the children, a Christmas fayre, a clothes SWISH, and the fireworks display to name but a few) the PTA has been able to contribute significantly to the running of the school.

We have lots planned for the Autumn Term - discos and cake sales as well as the fireworks display and the Christmas Jingle & Mingle that was quite the hit last year. The PTA is also taking on the village Apple Day - so start storing your apples! We hope to continue with the fundraising talks series so if you know of an interesting speaker, please get in touch.

The national schools funding picture is hugely challenging. During these difficult times, funds from the PTA help to pay for teaching assistants, books and equipment, as well as enabling the continuation of Music and Spanish for the older children.

New netball hoops have been provided and the School hall floor has had a face-lift.

The funds have also contributed to school trips and to the incredible whole-school Shakespeare project. The summer term saw all the children immersed in and enthralled by Twelfth Night, culminating in a phenomenal performance of the play.

We hope to see many of you at PTA events across the year - we'll share all the details on the blackboards around the village.

Freshford School PTA - Traffic & Transport

The School has been working hard to mitigate the impact of the A36 closure on the village and ensure the safety of the children, see the details in a separate article.

The School is still working with the local council on making all the walking routes safe and parking at different locations easy. Walking buses have been set up to minimise traffic in the village. We are doing all we can to make parking in easier, safer places and to make walking not just a solution to the problem of the A36 closure, but a preferable choice for health & wellbeing for us all. Let's see where the path leads us...

Freshford Preschool



The changing of seasons brings so many opportunities to explore, create and discover together! We have been making the most of the beautiful surroundings and heading out and about, practising our road safety skills, and homing in on noticing elements in our environments. Scavenger hunts help with this and are always lots of fun!

Stories feature heavily in preschool, with the preschoolers then taking the stories and role playing together, as well as mark making, drawing characters and thinking up different storylines to extend their ideas. It is lovely seeing the children's artwork then brighten our preschool room.

We have many fantastic experiences planned for the preschoolers to enjoy, including a French session, cooking activities, team games and an outing at The Egg for a festive theatre trip! We will soon be thinking about our Christmas performance, always a highlight of the year, with the preschoolers putting on a super show!

We always have a mindful, empowering time during our half termly yoga sessions, which focus on seasons, fascinations and our breathing, as well as music times, incorporating songs with instruments, and weekly sports sessions with our sports coach, developing the preschoolers gross motor skills in fun ways.

We are all excited about our much-loved garden receiving a well-deserved transformation this academic year, including new flooring to support the children's play in all weathers. Our wonderful committee are working hard to begin a fundraising campaign for renovating our garden. This is in the planning stages, currently with fabulous ideas of an outdoor mini-theatre, sensory planting, inbuilt seating and a wildflower/ wildlife area. We welcome input and advice from interested parties in the village as we begin our grant applications and finalise our plans. As a team, we are continually striving to develop our practice, and we found some staff training working on our core strengths really beneficial. This then filters down to the preschoolers, ensuring preschool is always such a positive, supportive, inclusive setting for all.

Progress with the Hop Pole Inn

Work on the Hop Pole Inn continues at an impressive pace. The new kitchen, bar and toilet block are all in place, and the tenant's first floor apartment is in progress, with fixtures, fittings and decor throughout the building being finalised and worked on. The garden is also taking great shape as well as final touches being made to the seating area at the front of the pub with a beautiful stone wall. At the start of the summer, we were delighted to welcome to the project Daahir Mohammed, a skilled traditional lime plasterer, who took the opportunity to teach his valuable skills to refugees while plastering the walls. In other good news, we held a couple of events at the pub over late summer along with an auction and raffle which raised around £17,000 plus matching, which was an incredible result. Following the success of that auction and raffle, we were left only needing a further £26,000. We are now very close to our final funding target, so please help to get us over the finish line by continuing to buy shares (via our website) in this brilliant community project.



So what's still to come? We're delighted that we're now on course for a reopening date of January 2025. There is a lot more work to be done by then and the final funding must be secured, but our goal is in sight. Before reopening we'll be introducing our new tenants which will be a huge milestone in this project, so look out for announcements coming soon. Thank you to all of our shareholders, volunteers, supporters and friends for everything you are doing to make this happen. Together we are the next chapter in the remarkable history of our beloved Hop Pole!

Need a Lift? Then Think Link



The Limpley Stoke and Freshford LINK is available to residents in the villages who lack the means to get from A to B. Volunteer drivers will take you to local hospital or doctors appointments, to shopping and to social visits. The service includes the delivery of prescriptions from the Galleries for those unable to collect them.

If you have a car and a little bit of free time please consider becoming a LINK driver!

Details about LINK are on the Freshford website, on posters in the Galleries shop, and on village noticeboards, or contact the LINK Co-ordinator on 07714 169216.

WINTER AT IFORD

ROASTS, FESTIVE LUNCHES, WORKSHOPS & MORE



It is only a few weeks before Iford's gardens close for the winter; but don't worry... our team in the Café & Kitchen will continue to offer an array of reasons to venture to the "other" end of the Iford valley!

We look forward to seeing you.

WINTER OPENING TIMES:

CAFÉ: THU TO SUN, 9:30 - 3PM

PASTRIES & BREAKFAST BUNS; LUNCHES FROM 11:30

RESTAURANT: FRI TO SUN, FROM 12

FRI/SAT: 3 COURSES FOR £30

SUN: PRE-BOOKED 'ULTIMATE ROASTS'

SUPPER CLUBS

Our popular tasting menus continue in November with "festive" dates in December:

15 & 29 NOV. / 13, 20, 21 DEC.

WINTER WORKSHOPS

From sourdough bread to fermentation, there's a Wednesday workshop for you.

FESTIVE THURSDAY LUNCHES

On Thursdays in advent, we will be running festive lunches. A super three course menu awaits; minimum table of 4, (no max).

CHRISTMAS FAYRE

Returning by popular demand, our expanded Christmas catalogue will feature traditional hams, figgy puddings, sausage and bacon Wellington, frangipane mince pies and more.

Orders open in October... drop into the café or jump on the website to get an order form.



IT'S ALL ON THE WEBSITE:

www.ifordmanor.co.uk

Update from Ward Councillor Fiona Gourley

A36 Closure

With the A36 closed for vital repairs until next Spring, I have met with Parish Councillors from Freshford and Limpley Stoke, Freshford Church School and Centurion Coaches, and representatives from National Highways, B&NES and Wiltshire Councils to discuss the situation and agree possible mitigations, including barriers, signage, marshals etc. Whilst the diversions for HGVs and other traffic are clear, when the drivers of large vehicles ignore signs they've got stuck down narrow lanes, causing chaos and congestion. A significant number of cars and vans are still driving through the villages, despite the dissuading signage. B&NES and Wiltshire Councils have asked sat nav companies not to direct traffic through the villages. I have found both B&NES and Wiltshire Councils and National Highways to be responsive, and together we will continue to monitor the situation and put in place other measures if necessary.

The National Highways website is a good source of information:

<https://nationalhighways.co.uk/our-roads/south-west/a36-limpley-stoke-carriageway-repairs-and-stabilisation/>

You can also contact them on 0300 123 5000 or info@nationalhighways.co.uk

Traffic and Congestion in Village

One of my biggest concerns is the impact on children in the village. Traffic to and from the school is obviously a big factor in congestion at peak times. The Primary School are putting in place some innovative ideas for 'walk and stride' sites. National Highways is subsidising parents and children to catch the 94 bus from the outskirts of Freshford and drop off safely by the school. I would urge parents to use these rather than your car, if possible, or create car-sharing pools.

Are you aware that since April, the Ralph Allen Coach has not been able to collect and deliver pupils in the village but has had to drop them off on the A36? This is because the coach (and indeed the 94 bus) frequently could not get through, particularly in the afternoon, because of parked cars blocking the route.

These might belong to primary school parents, visitors and walkers, as well as residents. As the evenings get darker, the children will have to walk down unlit, unpaved, narrow lanes. So, with Freshford Parish Council, B&NES is looking at ways to make walking through the village safer for residents of all ages. In the meantime it would help if everyone could try to avoid blocking the bus routes and narrow pinch-points.

Please contact me if you have any questions about B&NES Council. I might not have all the answers but I can find out where to look!

Ward Cllr Fiona Gourley

07803 015886

Fiona_Gourley@bathnes.gov.uk

Responding to the A36 Closure

Freshford Church School

While the current and essential A36 closure has caused a good deal of trepidation within the school community, the spotlight it shines on how our streets serve us, the public, has potent possibilities.

Last academic year, Freshford Church School continued to work hard promoting active travel to families because it benefits everyone's health and wellbeing but also to mitigate some inconsiderate driver behaviour increasingly impacting local residents.

Thanks to the support of community-spirited local businesses including the Inn at Freshford, the Limpley Stoke Hotel, Freshford Football Club and, on occasion, St Mary's Church Limpley Stoke, regular park and stride locations were established covering most access points to the village. The Playing Out event in March provoked much-needed discussion around traffic congestion and rat-running while providing both children and adults with an opportunity to envision safer spaces for all. The children's response to this was so positive we are hoping to plan future Playing Out events in the forthcoming academic year.

With the groundwork in place, sustaining these initiatives proved harder until works instigated by Wales and West Utilities closed Crowe Hill for nearly six months. A classic disruptor event, at least six new families adjusted their ordinary routines and formed a walking bus whose benefits, they claim, are unquantifiable. The absence of traffic on the route proved particularly persuasive too.

It is these circuit-breakers that can shake us out of our 'car brains'. Dr Ian Walker, Professor of Environmental Psychology at Swansea University, coined this term in response to rigorous research highlighting the unconscious bias that leads us to neglect the negativities of car dominance. Motonormativity, he continues, creates a cultural blind spot around many of the anti-social elements of driving including speeding, pollution and traffic crashes.

With the significant increase of traffic on our roads resulting from the A36 roadworks, the temptation to abandon the fledgling walking bus and rejoin the traffic for self-preservation feels overwhelming. But by pulling together in adversity and being creative, Ruth Poole, the new Headteacher of Freshford School, and governors believe this could instigate the mode-shift in habits the village so desperately needs. The work here has been hefty: letters written, meetings arranged, MPs lobbied and media coverage mobilised.

Parents have been encouraged to re-energise walking buses and park and stride options. By forming a critical mass of walkers, scooters and cyclists, the stewardship burden for adults can be shared better. Similarly, motorists tend to be more respectful of the space and safety of larger groups. Exploring public transport options, particularly trains, and car-sharing has also been suggested. Finally, parents have been urged to continue updating local MPs on the evolving situation as they have proved to be very receptive and proactive so far. Thinking differently is undoubtedly key. Whatever the ramifications of the A36 closure prove to be, one thing is certain: the boiling frogs cannot ignore the temperature increase any longer.

Talia Kelly, Freshford Church School Governor

Support the 94 Bus

Our local 94 bus is continuing to wend its way through Freshford and Limpley Stoke. Despite the chaos caused by works on the A36, the highly skilled drivers, Ben and Carlo, are managing to roughly stick to the timetable. There are occasional exceptions when Limpley Stoke is impassable, then a scenic detour is taken via Hinton Charterhouse and the Midford Valley, then back up to Monkton Combe to pick up any passengers there.

Sadly this disruption is impacting passenger numbers. In Freshford we are very fortunate to have a train. It is of course faster but much more expensive. For some time bus fares have been capped at £2 per journey. Libra Travel recommend that if passengers have an appointment then it would be wise to go on the earlier bus or by train. However, for shopping the bus will get you there and drop you off on Grand Parade, in the centre of town. Not only is it convenient, it helps reduce emissions and traffic. It will stop and pick up passengers anywhere along its route.

This time last year the bus was under threat, fortunately it has had a reprieve for now and is being funded. However, the viability of the service is reviewed periodically. If it appears there is insufficient demand between Trowbridge and Bath then its future could once again hang in the balance. So do support the bus and the valiant drivers who are doing their utmost to provide us with a reliable bus service.

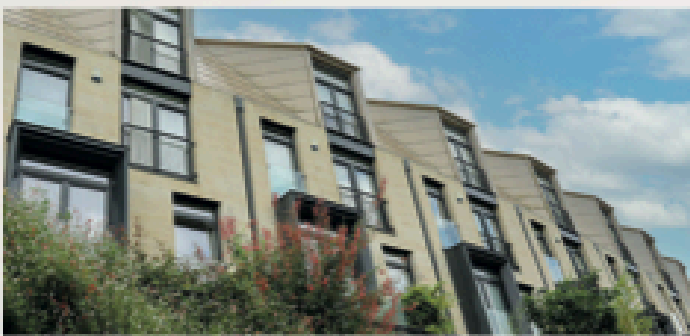
The timetable is available on Libra Travel's website at:

<https://www.libratravel.co.uk/current-timetables>

THE PREMIER BATH STONE FOR RESTORATION AND NEW BUILD PROJECTS

The beauty and consistency of Stoke Ground Bath stone is truly exceptional, which is why it is specified for projects that need outstanding quality and reliability.

Bath stone has been extracted from Stoke Hill since the 15th century and is still the best choice for high profile new build and restoration projects across the UK.



BATH STONE
COMPANY



01225 723 792

info@bathstone.com

www.bathstone.com



A Village Agents Work Is Never Done...

It's been a busy summer! I've found practical solutions for several new clients, whilst managing successful outcomes for some existing clients. Then there are others that I like to keep in touch with, mainly because they are such great company and a coffee and a good chin wag is great for the soul!

Recently, I helped a client access the Attendance Allowance they were entitled to, enabling them to employ a much needed cleaner and gardener which I also helped them find. Another client was struggling with the steps leading out of their front door and down to the road; they now have railings in place to make it safer for them to walk outside and a Blue Badge will also soon be arriving for them. I've recently had good news that an application to a local charity has been successful and they are able to fund a project for a client that will significantly improve their current home environment.

I have been fortunate to work closely with a new partner organisation, The Ageing Well Team. I've worked with the Team several times in the last few months when clients have been struggling with multiple and complicated medical conditions. Clients benefitting from the home visits are receiving new information to help them better understand their health conditions. Medication reviews are helping reduce the numbers of falls and hospital admissions.

Sometimes my role is less practical and more about being there for someone, often a close family member who is an unpaid carer at a time of family crisis. It can be reassuring to that know that someone's around if they need help, to listen to them and to reassure. My colleagues and I have also been working in partnership with Age UK on a hospital discharge project based at the RUH. The project works to ensure that, when patients are ready for discharge, whatever that patient needs to remain safe and to recuperate well at home has been identified in advance and put in place. As a result readmission rates have been reduced. This approach to discharge and working in close partnership with other local providers is groundbreaking and something we are proud of.

With the winter months around the corner we are already thinking about those vulnerable residents who will be affected by the withdrawal of the winter fuel payment. Worrying times ahead for some but we are always here to respond to calls for help. We are supporting people who, a few years ago, would have qualified for Council Social Care. The threshold for accessing Council Social Care has been raised and Village Agents, along with other partner organisations such as Age UK, are filling that gap.

If you, or someone you know, might benefit from support from the Village Agent scheme please get in touch.

Chantal Young, 07391 068705 / 01275 333700

Limpley Stoke & Freshford Film Season 2024-25

Limpley Creative launched our fourth season of Arthouse and World cinema in September at Limpley Stoke Village hall. We started with Yasujiro Ozu's acclaimed masterpiece from 1953, Tokyo Story. A timeless and gentle exploration of that most mysterious group - the family!

This year's programme includes the recent award winning film 'No Bears' by Iranian director Jafar Panafi. Although Panafi is forbidden from making films by the Iran regime and is currently in prison, the film was smuggled out of the country on a memory stick. Appropriately the film's subject follows the difficulties of a director trying to make a film.

'Uncle Boonmee Who can Recall His Past Lives', from 2010, by Thai director Arichatpong Weerasethakul is a mesmeric wonder of a film in which the central character meditates on his life and the lives of others. It won the Palme d'or at Cannes and many other awards.

A personal favourite of mine, our March film, is Jean Cocteau's 'Orphee', his unique adaptation of the Classical Orpheus myth was made in France in 1949, yet it remains fresh and magical.

All films will be shown on Wednesday evenings, Limpley Stoke Village Hall. Doors open at 7:00pm for 7:30pm screening. There is a bar for refreshments, with cards and cash accepted. The full programme for this year is:

18th September - Tokyo Story (1953)

16th October - River (2023)

15th January- Uncle Boonmee, Who Could Remember His Past Lives (2010)

12th February - Monster (2023)

12th March - Orphée (1950)

9th April - Perfect Days (2023)

Membership for the season is £25 and you can buy membership at any time by making an online payment to:

Account name: Limpley Stoke Village Hall Management Committee

Sort code: 20-05-06 Account number: 80572543 Reference: your surname

Please email limpleycreative@gmail.com to confirm the names of all members you have paid for. If you prefer to pay by cash or have any other questions, please get in touch via this email.

Everyone welcome!



Visit to Malaby Biogas

Warminster Thursday 25th July 2024

As global temperatures rise green electricity, generated from renewable sources, continues to be a hot topic. In the UK we are familiar with harnessing the power of the wind, sun and water. However there are solutions that are closer to home. Organic waste material from sources such as industrial food production; agriculture (arable and livestock); and hospitality can be used. Bath Natural History Society and friends visited Malaby Biogas installation near Warminster to learn more.

Anaerobic digestion is the process of decay of organic matter in the absence of oxygen. This occurs naturally in swamps and the stomachs of ruminants where microbes able to live in anoxic environments break down rotting plant material to produce a range of compounds including gases. Biogas production is the carefully controlled and regulated industrialisation of this process.

At the Malaby Biogas site, material for digestion comes from agriculture and food production. A permit is required before waste can be used. On arrival the waste is weighed before being transferred to a buffer tank where the first step of decomposition begins. It is then added to the main digester tanks for further decomposition. Conditions in these large domed drums are monitored carefully. The temperature is kept at 38oC, pH is controlled, and material is added to the digester over a few days to optimise microbial activity. As the waste breaks down methane is produced. This is collected and converted to electricity in a Combined Heat & Power turbine unit. A heat exchanger ensures a supply of hot water which is used on site to maintain the temperature in digesters as well as to supply hot water to other areas of the facility. The electricity provides power for 2500 houses locally. Nothing goes to waste. The material left in the bottom of the tanks after anaerobic digestion is pasteurised and used as nutrient-rich fertiliser.

In summary, a valuable carbon negative solution where waste is converted to a sustainable source of fuel, heat and bio-fertiliser.

Kate Souter

With thanks to the staff at Malaby Biogas, eco2 services and Bath Natural History Society (<http://www.bathnats.org.uk>) for organising the visit.

Freshford & District Horticultural Society



Meetings are held in Freshford Village Memorial Hall on the first Wednesday of each month. Doors open from 7.00pm, with meetings starting at 7.30 pm.

Annual Membership is £10.00.

2 October - Pot Plants in the Home

Nick Morgan, Retired, RHS Wisley

4 December - Grottos & Graveyards: Playing with the landscape

Neil Ross, Gardener and Teacher

6 November - Growing & Preparing Vegetables for Show

Graeme Bowyer, Show Judge

8 January - The World Beneath Our Feet

Leila Froud, Agricultural and Environment Consultant, Soil Association.

Rewilding at the Knepp Estate

My husband and I visited the Knepp Estate in July for a long weekend. It had been on our 'must go' list for a while but we had finally got around to it and it was certainly worth the wait.

The Knepp Estate, in West Sussex, is the subject of the book, and now a film, 'Wilding' by Isabella Tree. It is a 3,500 acre rewilding project that seeks to bring species-rich habitat back to Britain and has had some notable successes. It's also faced some serious opposition and had many hoops through which to jump to get to where it is today.

To stay on site there are a small number of camping pitches and glamping in the form of shepherds' huts, yurts and even treehouses.

I am not a fan of camping nowadays, but even I enjoyed the glamping given the nicely set up facilities, lovely people that we met and the amount of birdsong to which we woke up. I let the Merlin app run and the birds that it recorded kept piling in, even nightingale, although not in full voice at that point of the year.

During our walks we saw a turtle dove, storks and a purple emperor butterfly as well as the more easily spotted deer, long-horn cattle, Tamworth pigs and Exmoor ponies. You can follow self guided trails or join a guided safari to take you into wildlife only areas and to see the more elusive species.

We plan to go back again next year when the nightingale will be in full voice...



Freshford United FC Need You!

It's great that this year we will have a team in every age group from Under 5s to Under 15s (apart from Under 13s) as well as two adult teams.

All teams are looking for more players of all ages, abilities, boys and girls. We can offer a free tester session for two weeks to see how your child gets on before you have to commit to anything.

We also are always looking for coaches, helpers, supporters and committee members to cover a wide range of roles, some only require an hour of your time a month at the most so please contact Chris on the number below if you would like to get involved.

At Browns Park, Freshford, we have our Under 5s, 6s, 7s, 8's, 14s & Adults. At Rode Paying Fields we have our Under 9s, 10s, 11s and 12s, and at Prior Park our Under 15s & 16s play & train each week.

If your child is looking to get into football or would like to come along and watch then please get in touch and come and test it out.

The Club is after some rubble, but mainly any soil, at our pitches in Freshford so if you have a building project and want to save the cost on skip hire, we would be willing to accept these for free. If you want to discuss this more, please speak to Chris on the number below.

As always, we welcome any support from the village and if you want to keep up to date with what is happening information is always available on our website www.freshfordunitedfc.com

Chris Birleson
Club Manager
07738 741477 / cb@dentons.net

Saint Mary's Churchyard Autumn Clean Up



The Autumn Clean Up will take place on Saturday the 26th October, starting at 10.00am. How about coming along to lend a hand, doing a bit of light cleaning in the Church, peeling ivy off the churchyard walls, trimming path edges, and tidying up generally. It makes a big difference. All volunteers welcome!

LOCAL, SEASONAL & SUSTAINABLE

at

HARTLEY

FARM | KITCHEN | SHOP

LOCAL, FRESH PRODUCE & FREE-RANGE MEAT

SUNDAY LUNCHES

AUTUMN & CHRISTMAS FAMILY EVENTS



**OPEN SEVEN DAYS A WEEK.
LOCAL DELIVERY AVAILABLE.
HEAD ONLINE TO FIND OUT MORE**

www.hartley-farm.co.uk | 01225 864948



HOMWOOD

HOTEL | KITCHEN | SPA

PROUDLY PRESENTING
OUR ALL NEW SPA

Membership starts from £995 per year, plus a joining fee

homwoodbath.co.uk | spa@homwoodbath.co.uk
01225 580 439 | [@homwoodbath](https://www.instagram.com/homwoodbath)

Your very local, proactive, estate agent

75% of buyers consider the local community to be a key factor when choosing their new home....

As a local resident of neighbouring village Hinton Charterhouse, I don't just sell your home, I sell the fantastic lifestyle and vibrant community that can be enjoyed living in the area.

I provide a highly tailored service, manage the entire process for you from end to end and am available to my clients Monday to Sunday 9am - 9pm.

You can trust that I'll deliver results:

- 5/5 Google rating**
- Trustpilot 4.9/5 stars**



Call for a chat about your home:

Anabel Higgin - Area Partner

01225 413419

anabel.higgin@nested.com



nested
bath

G. MANNINGS
FUNERAL DIRECTORS

Independent and Family-Run

106 North Road, Combe Down, Bath, BA2 5DJ



Telephone: 01225 833013

Mobile: 07831 412582

gmanningsfuneraldirectors@btconnect.com

www.gmanningsfuneraldirectors.co.uk

Gary, Elaine & Lisa

A man in a grey t-shirt and jeans stands on a wooden stool, painting a wall with a brush. A woman with long dark hair, wearing a black dress, sits on the floor in the foreground, looking towards the man. The room has white walls and a window with blinds. The overall tone is teal and blue.

HOME IS...

OUR SPACE

01225 312 244
BATH@HAMPTONS.CO.UK
01225 445 646
BATHLETTINGS@HAMPTONS.CO.UK
HAMPTONS.CO.UK

Hamptons

THE HOME EXPERTS



Taking Fitness Back To Basics

ON A WORKING WILTSHIRE FARM



Register your interest

Church Farm, Winsley, Bradford On Avon, BA15 2JH
rustiqfitness.com | 01225 585915 | info@rustiqfitness.com



FIFTY YEARS OF GROWING EXPERIENCE

A family nursery with a wide range of unusual and interesting plants

Quality stock grown on site including:

- herbaceous perennials
- shrubs, climbers and roses
- ornamental trees
- fruit trees – standard, espalier and fan-trained
- seasonal bedding & herbs
- home grown vegetable plants

Open daily 9-5pm all year inc weekends



at Westwood

01225 862 392

UPPER WESTWOOD
BRADFORD-ON-AVON, BA15 2DE

(Follow the brown signs from the B3109)

www.downsidenurseries.co.uk

Just a mile from the Peto Garden at Iford Manor and the National Trust's Westwood Manor

THE INN  AT FRESHFORD

Join us for
LUNCH
SPECIALS

Starting in October

SERVED WEDNESDAY - FRIDAY, 12 - 3PM



THE INN AT FRESHFORD, THE HILL, FRESHFORD, BATH, BA2 7WG

hello@theinnatfreshford.com | 01225 722250 | @innfreshford  